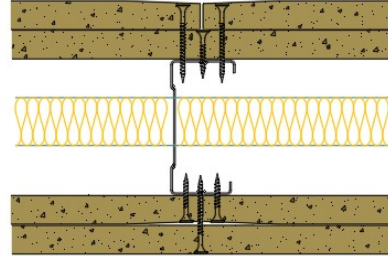


70-S-66(25) - SPEEDLINE System Data Sheet - Version V1 (24-10-23)

SPEEDLINE 70mm 'C' Stud Partition @600mm Ctrs,
with Inner Siniat GTEC 15mm Universal Board,
Outer Siniat GTEC 15mm Universal/Megadeco
Board each side, 25mm APR



System Performance Breakdown

Fire Resistance:

BS476 Part 22:1987:

Test Ref & Date or Applied Ref & Report:

Max Height:

Thickness:

Duty Grade: BS 5234: Part 2:1992:

Sound Insulation:

120/120 Minutes (Integrity/Insulation).

BTC 17593FA - BRE Report P102396-1011C

Refer to Speedline Specification Clause

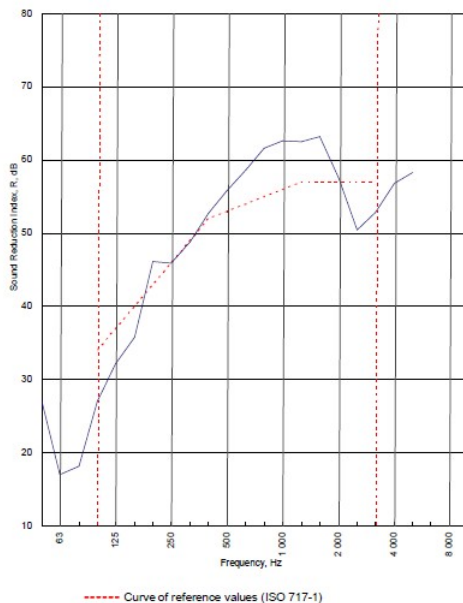
132 mm. (At Base Track, Excluding Finishes)

Severe - Annexes A-F

53 R_w dB, Date Tested or Assessed Against - 70-S-66SR(25)


Test Code:
H17530AA
Test Date:
12/08/2011


Freq. Hz	R dB
50	27.1
63	17.0
80	18.2
100	27.0
125	32.1
160	35.8
200	46.1
250	45.9
315	48.9
400	52.7
500	55.8
630	58.7
800	61.6
1 000	62.6
1 250	62.5
1 600	63.2
2 000	57.5
2 500	50.5
3 150	52.9
4 000	56.8
5 000	58.3
6 300	
8 000	
10 000	





Rating according to BS EN ISO 717-1:1997	R_w (C;Ctr) = 53 (-2;-8) dB
Evaluation based on laboratory measurement results obtained by an engineering method.	Max dev. 7 dB at 100 Hz
	$C_{50-3150}$ = -6 dB $C_{50-5000}$ = -5 dB $C_{100-5000}$ = -2 dB
	$C_{1,50-3150}$ = -17 dB $C_{1,50-5000}$ = -17 dB $C_{1,100-5000}$ = -8 dB

TESTED AT ONE OF THE UKAS ACCREDITED LABORATORIES BELOW

B.T.C (H-Ref on Graph) 

B.R.E 

AIRO 

S.R.L 

Customer: Metsec plc Hepsec Division

BTC 17530A: Page 9 of 11



SPEEDLINE Drywall Systems, Adsetts House, 16 Europa View, Sheffield Business Park, Sheffield, S9 1XH.

Tel: 0114 231 8030.

Email: enquiries@speedlinedrywall.co.uk

(As per the requirements set out in ISO/IEC 17025:2017 regarding test data the results stated have been carried out by voestalpine Metsec plc as part of the contract to supply Speedline Metal Sections to SIG Plc)